

## COMMUNITY UPDATE

**X-ELIO is pleased to share the revised footprint for the proposed Maxwell Downs Renewable Project.**

Our team at X-ELIO have taken on board community concerns and feedback received through previous community engagement since the project was first announced in 2021.

The revised footprint below incorporates a new site at Maxwell to the west which we anticipate will improve visual outcomes for neighbours. This change means there will be fewer impacted neighbours and will allow:

- A more flexible layout that enables more options for solar panel siting, additional landscaping, and design features.
- Greater setbacks from neighbouring property boundaries.
- Options to continue complementary agricultural activities, such as grazing and revegetation, within the site footprint.

Project location: MAXWELL

Project capacity: 327 MWp

Battery storage capacity: 300MW (2 hour)

Size of site: 725 hectares

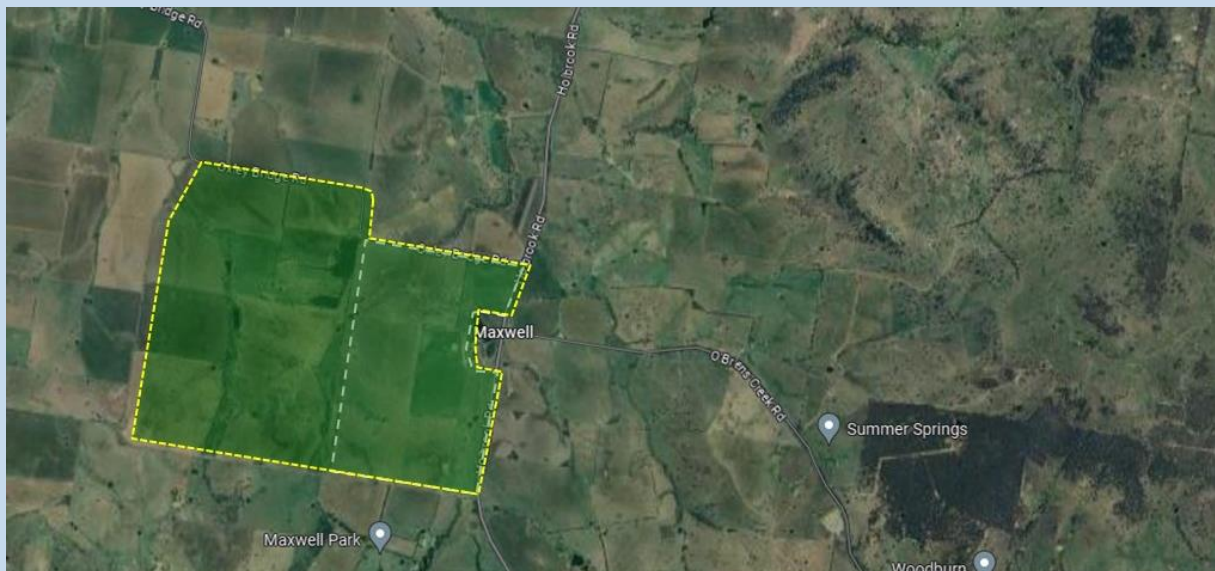
## WHAT'S NEXT?

Further studies, testing and assessments will be undertaken on the revised project site. These include: soil survey and assessment, biodiversity studies, noise and visual impact assessments, and hydrology. These studies will inform future submissions to the NSW Department of Planning, Housing and Infrastructure (DPHI) as part of the State Significant Development Application (SSDA) process. **You may notice some of our specialists in the area undertaking these studies over the coming months.**

A new permitting process will commence based on the new footprint for which a timeline has not yet been confirmed. This project will follow the standard SSDA process.

**We will provide the community with further information as the project progresses and the studies are completed.**

## Project footprint, March 2024



**Stay up to date and reach out for further information**

[maxwell.downs.community@x-elio.com](mailto:maxwell.downs.community@x-elio.com)

<http://www.x-elio.com/projects-archive/maxwell-sf/>

## ENGAGING WITH COMMUNITY

X-ELIO is committed to the Maxwell area and community for the long term. We are keen to work with our neighbours and community about the revised footprint, specific mitigations for consideration, and opportunities for the project to bring meaningful benefits to the community.

**You can find out more through our website, contact us via email or sign up to our newsletter.**

In due course the project team will be visiting the area to provide more information in-person to neighbours and the broader community.

There will be multiple opportunities throughout the planning and permitting process to provide feedback, share your concerns and ideas, and talk with us directly.

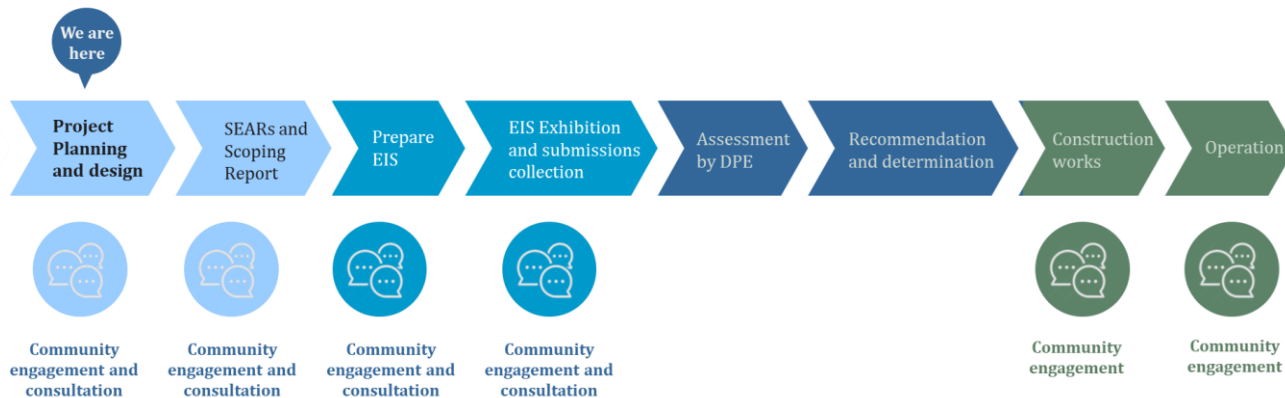
## WHAT INFORMED THE CHOICE OF SITE LOCATION?

An extensive location and pre-feasibility connection assessment was conducted in 2021 which first informed the selection of the region and initial site.

Among the many factors that were considered when choosing the project location, the key ones were:

- Land suitability and environmental factors such as topography, soil, and hydrology.
- Proximity to grid infrastructure and network load capacity.
- Existence of transmission lines within the site footprint.
- Community and stakeholder feedback.
- Proximity to NSW's Renewable Energy Zones.
- Site accessibility via road.

### State Significant Development Application (SSDA) standard process



## THE BIGGER PICTURE – RENEWABLES IN AUSTRALIA

Decarbonising the energy sector will be one of several critical measures to enable Australia to meet its international and domestic commitments to reduce carbon emissions, greenhouse gases and limit global warming. Solar is one of the renewable technologies required to support this transition.

**The pathway towards Net Zero** will require a coordinated, inclusive, and deliberative approach. It is important for the community to be consulted, have a say in the future and share in the benefits of the global transition to Net Zero. X-ELIO is committed to the community of Maxwell and surrounds through engagement, partnerships and promoting economic growth through job creation, upskilling, and training, and using local suppliers wherever possible.

**Stay up to date and reach out for further information**

[maxwell.downs.community@x-elio.com](mailto:maxwell.downs.community@x-elio.com)

<http://www.x-elio.com/projects-archive/maxwell-sf/>