

Canyonleigh Battery Energy Storage System (BESS) & Willavale Park BESS

Project Update | March 2025



X-ELIO is a world leader in renewable and sustainable energy, specialising in the development, construction, and operation of renewable energy projects worldwide.

We are currently working toward building and operating two battery energy storage systems (BESS) in the Goulburn Region.

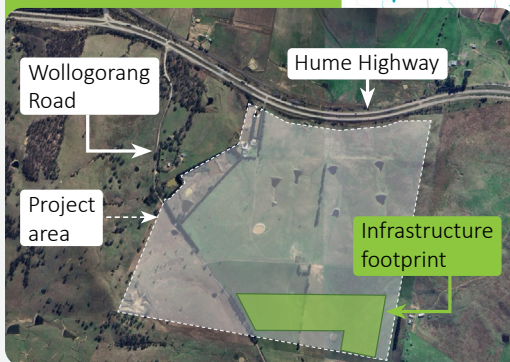
The purpose of a BESS is to absorb excess electricity generated during times of lower demand and store it until it is needed to meet periods of higher demand. At that point, the power is released from the BESS into the grid for distribution to households and businesses via their chosen energy retailers.

Storing energy provides greater flexibility and reliability by helping to better match cheaper forms of electricity generation with energy consumption. This helps reduce or even avoid costs by stabilising the local electricity networks through improved management of peaks and troughs in supply and demand. A BESS can also provide backup power in case of outage.

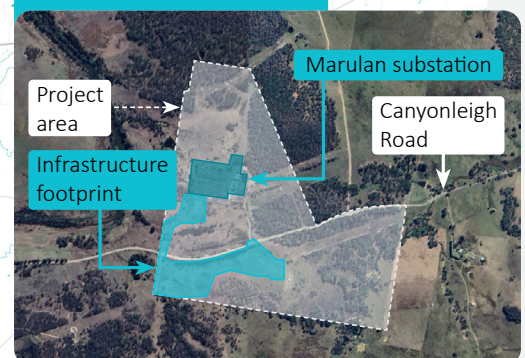
The two projects are:

- ⊕ **Canyonleigh BESS**
Located at Brayton, 12 km north of Marulan
- ⊕ **Willavale Park BESS**
Located at Wollogorang, 22 km southwest of Goulburn

Willavale Park BESS Project Indicative project study area



Canyonleigh BESS Project Indicative project study area



Details of our upcoming in-person community drop-in sessions and online survey are on the back page.



Planning update

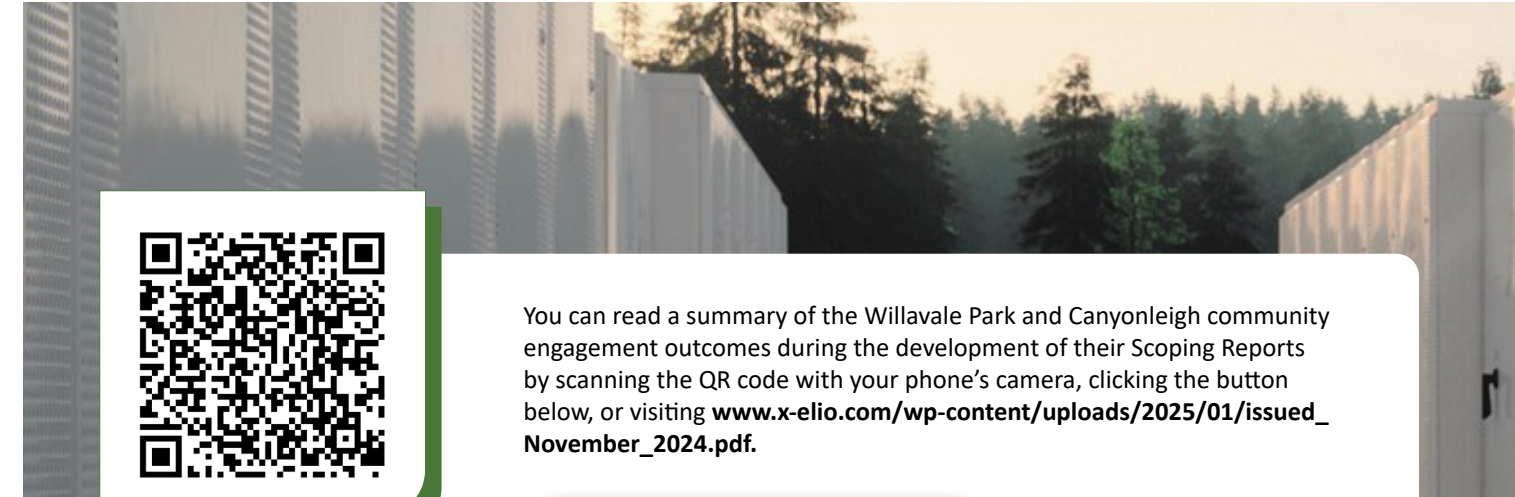
Since our last update in July 2024, we have undertaken further preliminary investigations into any potential environmental and social impacts of each project. We also engaged with the local community and targeted stakeholders through individual meetings, an initial public information session and an online survey.

We want to thank everyone who met with us, attended the initial information session and/or completed the survey. Your insights have been important in helping us better align to local priorities, and understand local constraints and opportunities.

For example, the “Willavale Renewable Hub” was originally intended to consist of both a BESS and a large number of solar photovoltaic panels (typically referred to as a ‘solar farm’). However, following extensive technical review and consideration of insights gained from community and stakeholder feedback, the solar farm has been removed from the plans and this project is now to be called simply the Willavale Park BESS.

In November 2024, we submitted a Scoping Report for each BESS project, outlining the findings from our various preliminary investigations.

On 12 December 2024 the New South Wales Department of Planning, Housing and Industry (DPHI) issued both projects with the Secretary’s Environmental Assessment Requirements (SEARs) based on their submitted Scoping Reports, marking the first major milestone of the planning approvals process.

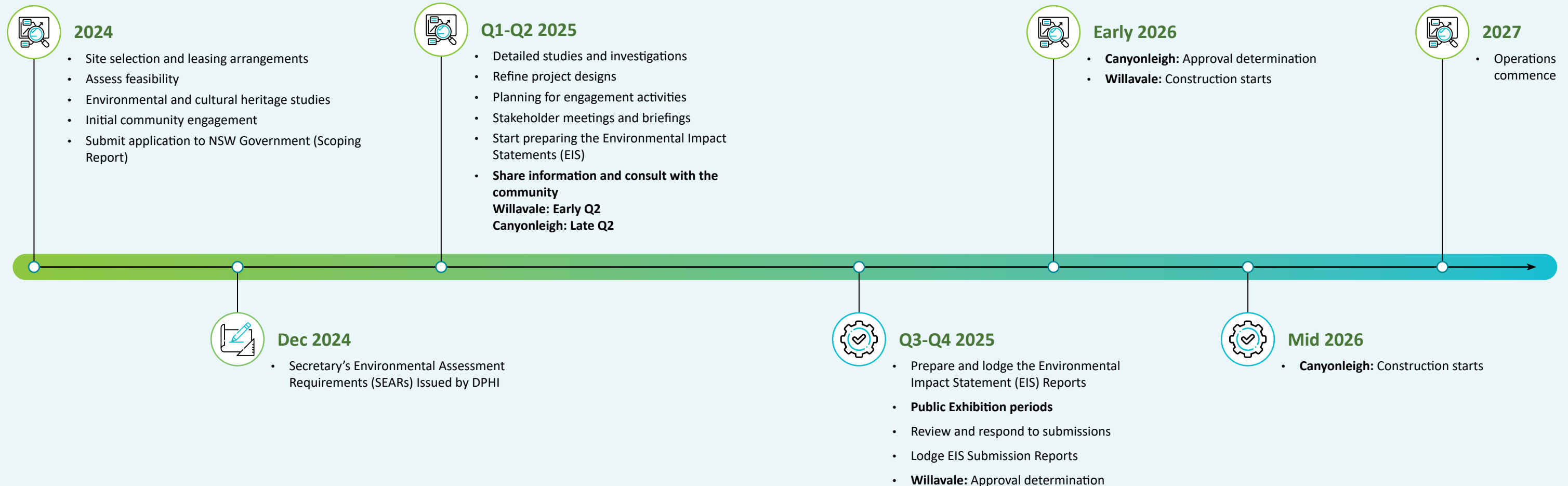


You can read a summary of the Willavale Park and Canyonleigh community engagement outcomes during the development of their Scoping Reports by scanning the QR code with your phone’s camera, clicking the button below, or visiting www.x-elio.com/wp-content/uploads/2025/01/issued_November_2024.pdf.

Community Engagement Outcomes



Project timelines





What comes next?

Using industry good practice and the SEARs as a guide, our specialist teams will continue investigating the project sites, refining the designs, and engaging further with the community and stakeholders to understand issues and explore potential benefits X-ELIO can bring to the area.

Once completed, the findings from the studies will be documented in an Environmental Impact Statement (EIS) for each project and submitted to DPHI for review and an open public comment period later in the year (known as the EIS Exhibition Period). The EIS reports are expected to identify potential environmental and social impacts from the projects and how X-ELIO can avoid, minimise, or compensate for these and ensure the projects comply with relevant laws and regulations.

Have your say

In Q2 2025, X-ELIO is facilitating in-person drop-in sessions in the Goulburn area for each of the two BESS projects. These sessions will allow the community another opportunity to meet the team, learn about the refined plans for each project, and provide feedback. We will also gather community feedback via surveys, with all feedback to be considered in the final proposed plans and incorporated into the EIS reports.

During the EIS Exhibition Period, you can review the final EIS report and submit any further views you may have directly to DPHI. X-ELIO will then be asked to consider and provide comment on these prior to the project being considered for approval.

Details for the first in-person drop in session for the Willavale Park BESS in Wollongorag are provided below. We would like to hear from as many community voices as possible, so please come and see us!

Goulburn Marketplace Shopping Centre Foyer

Friday, 11 April 2025 | 3PM- 7PM

12-20 Verner Street, Goulburn

Belmore Park - adjacent to the Goulburn Rotary Parkside Market

Saturday, 12 April 2025 | 8.30AM- 12.30PM

Opposite the public toilets close to 3 Montague Street, Goulburn

Our next update will provide details on the timings and locations of the community drop-in sessions for the Canyonleigh BESS project in Brayton, and more details about the expected time frames for the EIS Exhibition Periods for both projects.



We are looking for feedback on local values and ideas for how X-ELIO can provide community benefits and better engage with the community.

Fill in our latest survey for the Willavale Park BESS project by scanning the QR code with your phone's camera, clicking the button below, or visiting www.surveymonkey.com/r/WillavaleParkBESS.

Willavale Park BESS Community Survey

If you have a question, would like to provide early feedback, or want to sign up to receive these updates by email, you can contact the project teams at:

canyonleigh.community@X-ELIO.com or willavale.community@X-ELIO.com